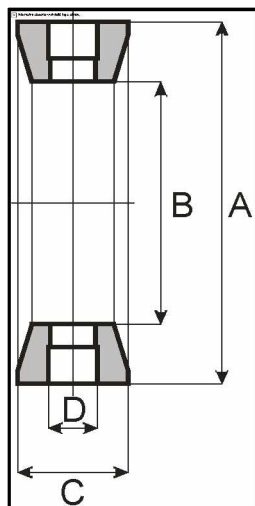
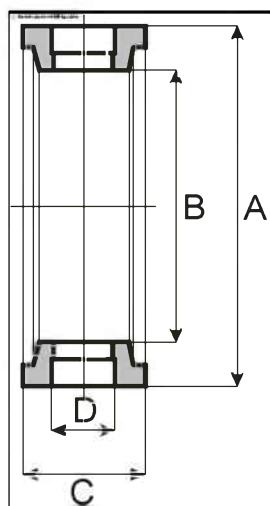


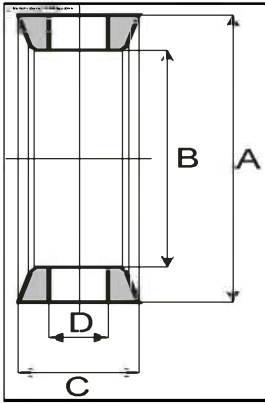
USZCZELKI ZAWORÓW KLAPOWYCH



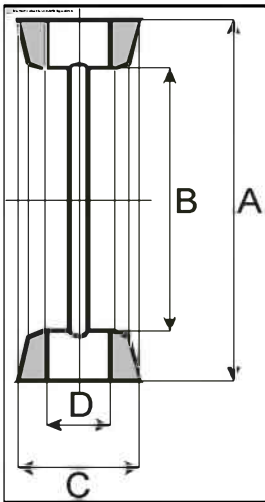
Lp	Typ	A	B	C	D
1	DN-25/A	39,0	26,0	20,0	9,0
2	DN-32/A	48,0	31,8	20,0	8,5
3	DN-40/A	54,0	38,0	21,0	10,0
4	DN-50/A	66,0	50,0	21,0	10,0
5	DN-63,5/A	77,0	60,5	20,0	10,5
6	DN-65/A	83,0	66,0	22,0	10,0
7	DN-76/A	91,0	72,0	24,0	11,0
8	DN-80/A	101,0	81,0	24,0	13,0
9	DN-100/A	114,0	100,0	27,0	12,0
10	DN-125/A	150,0	125,0	30,0	16,0
11	DN-150/A	175,0	150,0	29,0	16,0



Lp	Typ	A	B	C	D
1	DN-25/H	40,0	23,5	23,0	12,0
2	DN-40/H	54,5	38,5	23,0	12,0
3	VMS 50,8	63,5	48,0	20,0	10,3
4	VMS 63,5	76,0	59,0	24,0	12,7
5	DN-50/H	66,0	50,0	23,0	12,0
6	DN-65/H	82,0	66,0	23,0	12,0
7	SV04/TYP95 DN65	90,5	70,5	24,0	13,3
8	DN-70/H/B	90,0	71,0	26,5	12,0
9	DPX/DPAX DN65	90,0	72,5	27,3	12,7
10	DN-80/H	97,0	81,0	23,0	12,0
11	DN-100/H	117,0	101,0	26,5	14,0



Lp	Typ	A	B	C	D
1	DN-50	65,0	49,0	20,0	11,0
2	DN-50/1	66,0	50,0	21,0	10,5
3	DN-65	83,7	65,7	22,0	11,0
4	DN-75	91,8	72,3	23,5	13,4



Lp	Typ	A	B	C	D
1	DN-50/S	66,0	48,0	21,0	11,0
2	DN-50/SO	63,0	48,0	20,0	11,0